



# The IQ & Co Bangor Town Regatta 2022

## Incorporating the Sigma 33 OOD Irish and Class Championship

### Royal Ulster Yacht Club

### Thursday 23<sup>rd</sup> to Sunday 26<sup>th</sup> June 2022

## **AMENDED SAILING INSTRUCTIONS**

### **ORGANISING AUTHORITY**

This event will be organised by Royal Ulster Yacht Club. (RUYC)

The notation '[NP]' in a rule of the sailing instructions (SIs) means that a boat may not protest another boat for breaking that rule. This changes RRS 60.1(a)

### **1 RULES**

- 1.1 The event is governed by the rules as defined in *The Racing Rules of Sailing*.
- 1.2 Racing rules Race Signals AP, 33, 34, 60.1(a), 60.1(b), 61.3, 62.1(a), 62.2, A2 A5.1 and A5.2 will be changed. The changes appear, in full, in this notice of race or in the sailing instructions. The sailing instructions may also change other racing rules.

### **2 CHANGES TO SAILING INSTRUCTIONS**

Any change to the sailing instructions will be posted before 0900 on the day it will take effect, except that any change to the schedule of races will be posted by 2000 on the day before it will take effect.

### **3 COMMUNICATIONS WITH COMPETITORS**

Notices to competitors will be posted on the official notice board located in the foyer of Royal Ulster Yacht Club and duplicated at Bangor Marina.

### **4 CODE OF CONDUCT**

[DP] Competitors and support persons shall comply with reasonable requests from race officials.

### **5 SIGNALS MADE ASHORE**

- 5.1 Signals made ashore will be displayed at a flagpole at Bangor Marina.
- 5.2 When flag AP is displayed ashore, '1 minute' is replaced with 'not less than 60 minutes' in Race Signals AP. This changes race signals AP.

### **6 SCHEDULE OF RACES**

- 6.1 See NoR 9
- 6.2 To alert boats that a race or sequence of races will begin soon, the orange starting line flag will be displayed with one sound signal at least five minutes before a warning signal is made.

### **7 CLASS FLAGS AND COURSE AREA**

Class 1	IRC TCC or NHC 1.060 and above	Numeral 1	Course 1
Class 2	IRC TCC or NHC from 1.010 to 1.059	Numeral 2	Course 1
Class 3	IRC TCC or NHC 0.940 to 1.009	Numeral 3	Course 1
Class 4	IRC TCC or NHC 0.830 to 0.939	Numeral 4	Course 1
Class 5	NHC Restricted Sail	Numeral 5	Course 1
Class 6	Sigma 33 OOD	G	Course 2
Class 7	RS Elite Class	E	Course 2

Class 8	Coastal Class NHC	Numeral 8	Course 2
Class 9	Coastal Class NHC Restricted Sail	Numeral 9	Course 2
Class 10	Classic Boats - Waverley and Fairy	T	Shore Battery

## 8 RACING AREA

8.1 Classic Boats will race close to shore from the RUYC Battery in front of the club. The position of the two course areas for the remaining fleets will be outlined at the briefing.

## 9 COURSES

9.1 Courses to be sailed for Classes 1 to 5 will be Windward Leeward or Triangle and a short coastal race. The diagrams in Addendum A show the courses, the order in which marks are to be passed and the side on which each mark is to be passed. For race 4, coastal race see Addendum C.

9.2 Courses for Classes 6 and 7 will be windward leeward. See Addendum B.

9.3 Courses for Classes 8 and 9 will be coastal. See Addendum C

9.4 Courses for Class 10 will be around fixed marks off RUYC. See Addendum D

9.5 The courses to be sailed will be indicated by boards on the side of the committee signal vessel or for Class 10 see Addendum D.

9.6 Courses for the coastal races may also be announced on VHF. VHF channels for each race area will be given at the briefing. Failure to do so or failure to hear any transmission will not be grounds for redress. This changes RRS 62.1.

## 10 MARKS

10.1 Except for Class 10 and the coastal race, marks 1, 1A, 4S and 4P will be round yellow inflatables, marks 2 and 2A will be round yellow inflatables with a horizontal black stripe. The start mark will be a round green inflatable, the finish mark will be a round red inflatable .

10.2 When a gate mark is used, if one or other of the gate marks is missing, the remaining mark shall be rounded to port. This changes RRS 34.

10.3 Marks for Class 10 are all round, numbered inflatables. Coastal Race marks are described in addendum D.

## 11 OBSTRUCTIONS

Does not apply

## 12 THE START

12.1 Except for Class 10, the starting line will be between a staff displaying an orange flag on the starting mark at the starboard end and the course side of the port end starting mark.

12.2 The starting line for Class 10 will be between a white pole on shore with a white X topmark and a red buoy (shown as F on the Class 10 course diagram).

12.3 A boat that does not start within 5 minutes after her starting signal will be scored Did Not Start without a hearing. This changes RRS A5.1 and A5.2.

## 13 CHANGE OF THE NEXT LEG OF THE COURSE

13.1 To change the next leg of the course, the race committee will move the original mark (or the finishing line) to a new position.

13.2 Minor course changes may not be signalled. This changes RRS 33.

## 14 THE FINISH

14.1 The finishing line for windward leeward and triangle races will be between a staff displaying a blue flag on the committee boat at the starboard end and the course side of the port-end finishing mark.

14.2 The finishing line for Class 10 and all coastal races will be between a white pole on shore with a white X topmark and a red buoy (shown as F on the class 10 course diagram).

## 15 PENALTY SYSTEM

See NoR 14.

## 16 TIME LIMITS

- 16.1 The time limit for all windward leeward and triangle races fleets is 90 minutes.
- 16.2 The time limit for coastal races is 1800.
- 16.3 In windward leeward and triangle races, boats failing to finish within a 20 minute finishing window after the first boat in her class sails the course and finishes will be scored Did Not Finish without a hearing. This changes RRS 35, A5.1 and A5.2

## **17 HEARING REQUESTS**

- 17.1 The protest time limit is 90 minutes after the last boat on their course has finished the last race of the day or the race committee signals no more racing today, whichever is the later. This changes RRS 61.3 and 62.2.
- 17.2 Hearing Request forms are available at the race office.
- 17.3 Notices will be posted no later than 30 minutes after the protest time limit to inform competitors of hearings in which they are parties or named as witnesses.
- 17.4 Hearings will be held in the protest room at RUYC.

## **18 SCORING**

As per NoR 15

## **19 SAFETY REGULATIONS**

[DP] [NP] A boat that retires from a race shall notify the race committee as soon as possible.

## **20 REPLACEMENT OF CREW OR EQUIPMENT**

- 20.1 [DP] [NP] Substitution of competitors is not allowed without prior written approval of the race committee.
- 20.2 [DP] [NP] Substitution of damaged or lost equipment is not allowed unless authorised by the race committee. Requests for substitution shall be made at the first reasonable opportunity.

## **21 EQUIPMENT AND MEASUREMENT CHECKS**

- 21.1 [NP] A boat or equipment may be inspected at any time for compliance with the class rules, notice of race and sailing instructions.
- 21.2 Sigma 33 Class only: Owners should complete and submit their OOD compliance form via the Class Secretary prior to racing commencing. Inspection of individual yachts will take place based on the last race sailed on Thursday 23rd June. With each boat inspecting the boat finishing one place ahead of them, first place will inspect last place. The Class Association Committee reserve the right to inspect any boat at any time during the event. The Committee reserves the right to inspect boats finishing 1st, 2nd or 3rd overall.
- 21.3 Sigma 33 Class only: The optional No 3 and storm sails do not need to be carried while racing in the 2022 Class Championship in Bangor.

## **22 SUPPLIED BOATS**

Does not apply.

## **23 OFFICIAL VESSELS**

Course 1 Committee Boat will be a white, 37 foot sailing boat. Course 2 Committee Boat will be a Dark Blue motor yacht.

## **24 [DP] [NP] SUPPORT TEAMS**

As per NoR 16

## **25 TRASH DISPOSAL**

Trash may be placed aboard official or support person vessels.

## **26 BERTHING**

[DP] [NP] Boats shall be kept in their assigned places while in the marina.

## **27 HAUL-OUT RESTRICTIONS**

[DP] Boats shall not be hauled out during the event except with and according to the terms of prior written permission of the race committee.

**28 DIVING EQUIPMENT AND PLASTIC POOLS**

Underwater breathing apparatus and plastic pools or their equivalent shall not be used around keelboats between the preparatory signal of the first race and the end of the last race of the event.

**29 PRIZES**

As per NoR 24

**24 RISK STATEMENT**

As per NoR 22.

**25 INSURANCE**

As per NoR 23

# ADDENDUM A – Course 1 - Courses: Classes 1 to 5

## Windward – Leeward

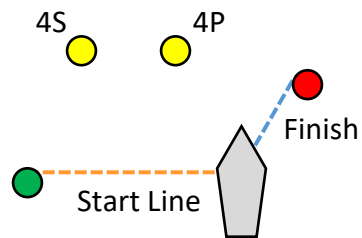
L2 1, 1A, 4P/4S, 1, 1A, 4P, Finish  
 L3 1, 1A, 4P/4S, 1, 1A, 4P/4S, 1, 1A, 4P, Finish

1A ● ● 1

Marks 4P/4S are a gate.  
 Marks 1, 1A and 4P to be rounded to Port.

2A ● ● 2

Classes 4 and 5 will use marks 2 and 2A instead of 1 and 1A



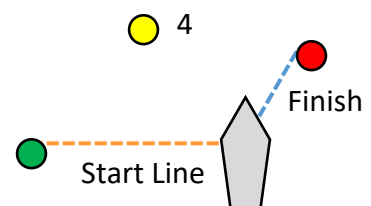
## Triangle

T2 1, 1A, 2, 4, 1, 1A, 4, Finish  
 T3 1, 1A, 2, 4, 1, 1A, 4, 1, 1A, 2, 4, Finish  
 T4 1, 1A, 2, 4, 1, 1A, 4, 1, 1A, 2, 4, 1, 1A, 4, Finish

1A ● ● 1

Marks 1, 1A, 2 and 4 to be rounded to port.

2 ●



## ADDENDUM B – Course 2 - Courses: Classes 6 and 7

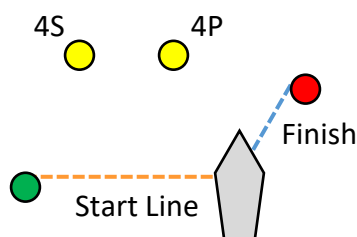
### Windward – Leeward

L2 1, 1A, 4P/4S, 1, 1A, 4P, Finish  
L3 1, 1A, 4P/4S, 1, 1A, 4P/4S, 1, 1A, 4P, Finish

1A ● ● 1

Marks 4P/4S are a gate.

Marks 1, 1A and 4P to be rounded to Port.



## ADDENDUM D – Courses: Class 10

The course to be sailed will be displayed on numeral boards on the front wall of the battery.

These boards will have either a red or green backgrounds indicating how the marks are to be rounded (leaving them to port or starboard respectively).

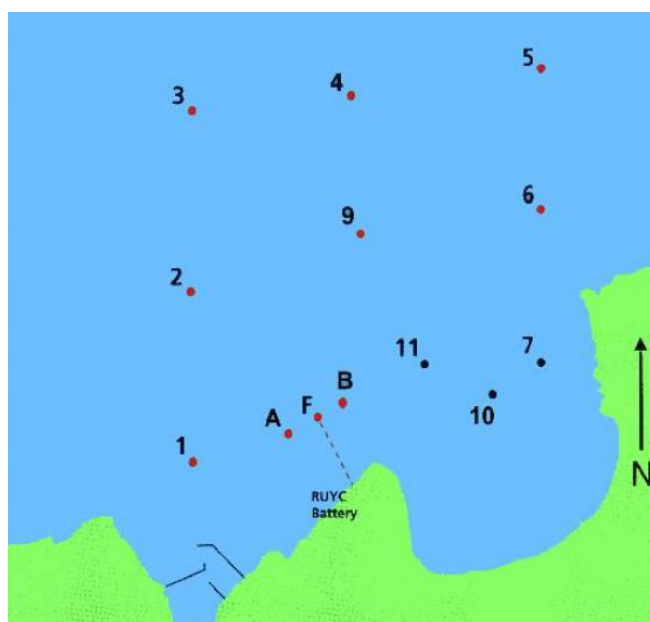
Second and subsequent rounds may be sailed and will be displayed as above when the leading boats approach the finish line of the previous round(s).

Two buoys (A & B) are laid to the south-West and North-East of the red starting line buoy and approximately in line with that buoy. The buoys A & B have no significance when starting.

At the end of a round, or when finishing the start/finish line shall be crossed only in the direction that it was crossed when starting.

When crossing the finish line West to East, marks A & B shall be left to Port. When crossing the finish line East to West, marks A & B shall be left to Starboard.

The finishing signal shall be Flag S.



# ADDENDUM C – Coastal Races

The course to be sailed will be indicated by displaying the appropriate number or letter of each mark to be rounded on the side of the committee boat before or at the warning signal. Boards shall be read from left to right for order of rounding. Classes 1, 2 and 3 will use the course boards forward on the start boat and classes 4, and 5 will use the course boards aft on the start boat. The bearing to the first mark will be displayed on a board at the stern of the committee boat.

The Finish line will be between a white pole with a white diagonal cross at RUYC battery and a Red finishing mark F. Note there are two orange marks in the vicinity of the battery either side of the finish mark F.

Mark designation and name	Approximate Position		Mark type
0 Yellow laid mark rounded to Starboard	Approximately 1 Nm to windward of Start Boat		Yellow Inflatable
1 Yellow laid mark rounded to Port			
2 RUYC/BYC No 1, rounded to Starboard	54° 40.24' N	5° 40.16' W	Red Inflatable marked 1
3 RUYC/BYC No 1, rounded to Port	54° 42.85' N	5° 42.85' W	Green Navigation Buoy
4 Kilroot, rounded to Starboard			
5 Kilroot, rounded to Port	54° 41.86' N	5° 42.85' W	Red Navigation Buoy
6 Helen's Bay, rounded to Starboard			
7 Helen's Bay, rounded to Port	54° 40.43' N	5° 45.92' W	Yellow Buoy X top mark
8 Rockport Outfall, Rounded to Starboard			
9 Rockport Outfall, Rounded to Port	54° 41.18' N	5° 35.71' W	North Cardinal Buoy
L South Briggs, rounded to Starboard			
T South Briggs, rounded to Port	54° 40.45' N	5° 39.20' W	Black buoy marked 11
A RUYC/BYC No 11, rounded to Starboard			
M RUYC/BYC No 11, rounded to Port	All three Islands to be rounded: Copeland, Mew & Lighthouse Islands. Caution – Ninion Bushes and other hazards.		
G Copeland Islands, rounded to Starboard			
R Copeland Islands, rounded to Port	54° 40.34' N	5° 39.57' W	Red Inflatable marked F
F RUYC Finish Line F			
X Cloghan Jetty, rounded to Starboard	54° 44.13' N	5° 41.61' W	Green Navigation Buoy
Y Cloghan Jetty, rounded to Port			

